

SMART CITY™
ELEVATORS BY EASA

AWESOME LIFESTYLE



SMART CITY™
ELEVATORS BY EASA

EASA Elevators Private Limited

Head Office: No:2, Aravali Complex, Rajiv Colony, Near Rajiv Chowk, NH-8 Gurgaon-122001, Haryana

Experience Centres

SCO 32, JLPL Sector 82, Mohali-160082, Punjab

No:3, Aravali Complex, Rajiv Colony, Near Rajiv Chowk, NH-8, Gurgaon-122001, Haryana

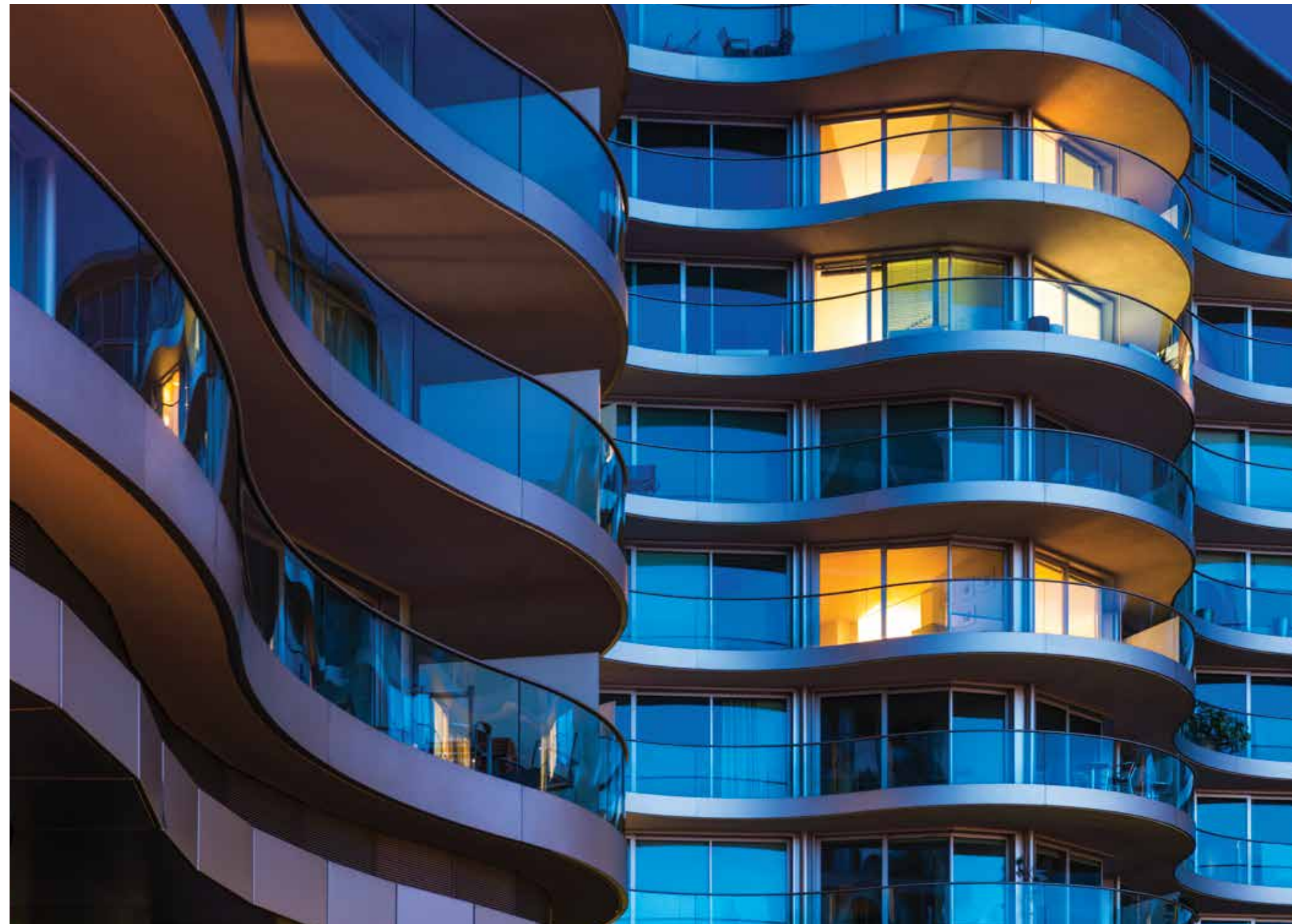
Manufacturing Facility

G-1, 603, 604-605, RIICO Industrial Area, Khuskhera Rajasthan-301707

Sales and Service

Delhi NCR | Haryana | Uttarakhand | Punjab | Rajasthan | Uttar Pradesh | Himachal Pradesh | Jammu & Kashmir

Smart it is!



SMART CITY ELEVATORS

Architects are redefining cities with a focus on efficient lifestyle homes designed to complement your surroundings, with indoor and outdoor spaces that enhance your connection to your environment.

EASA® brings you these Lifestyle Smart City Elevators which are extremely safe, compact and a pleasure to ride. Smart Elevators are intelligent, eco-friendly and brimming with features.

Special focus for people with mobility concerns has been addressed in design, development and installation of Smart City Elevators.

EASA® has set a trend in the elevator industry with various designs of lifestyle elevators that compliment your residences and commercial buildings with a choice of Contemporary, Classic, Royal, Natural and Funky finishes.

Smart it is!

REDEFINING VERTICAL MOBILITY WITH SMART SOLUTIONS



Efficiency: Compact and reliable, Permanent Magnet Synchronous Motors are the order of day! These highly efficient gearless machines save you a lot of money as they consume less power and are eco-friendly.



Space: Only EASA® designs elevators for spaces as small as 1250mm wide shafts. A treat for architects and home owners. And moreover, if you do not want to block spaces and light with civil shafts, EASA® offers a self-supporting modern steel structure.



Ride: Integrated controllers for smooth start and smooth stop ensure fine ride quality and saving too.



Reliability: ISO certified factory and life time services at your door step ensures super reliability.



Low Maintenance Cost: The price over 10 years usage determines the overall price of the elevator. Low cost of maintenance is passed to the customers advantage by incorporating robust and maintenance-free designs.



Mobility: All EASA® lifts are designed with extra wide door opening and programmable door opening time. Audible braille push buttons and audible signals are some very valuable features when the lift reaches a floor level.



BEST OF TECHNOLOGY AT WORK

TORINDRIVE
(GEARED MOTORS)

MCE
Motion Control Engineering
(CONTROL TECHNOLOGY)

UNITED STATES OF AMERICA

mik-el[®]
LIFT TECHNOLOGIES
(CONTROLLER TECHNOLOGY)

GENEMEK
(SIGNALS & BUTTONS)

TURKEY

digipara
liftdesigner
(LIFT SOFTWARE)

GERMANY

Nidec
(PERMANENT MAGNET SYNCHRONOUS MOTORS)

TORINDRIVE
(GEARED MOTORS)

IBST
(SIGNALS & BUTTONS)

MCE
Motion Control Engineering
(CONTROL TECHNOLOGY)

CHINA

EASA[®]
ELEVATORS
WORLDWIDE
TECHNOLOGY
PARTNERS

MARAZZI
(GUIDE RAIL SYSTEM)

ITALY

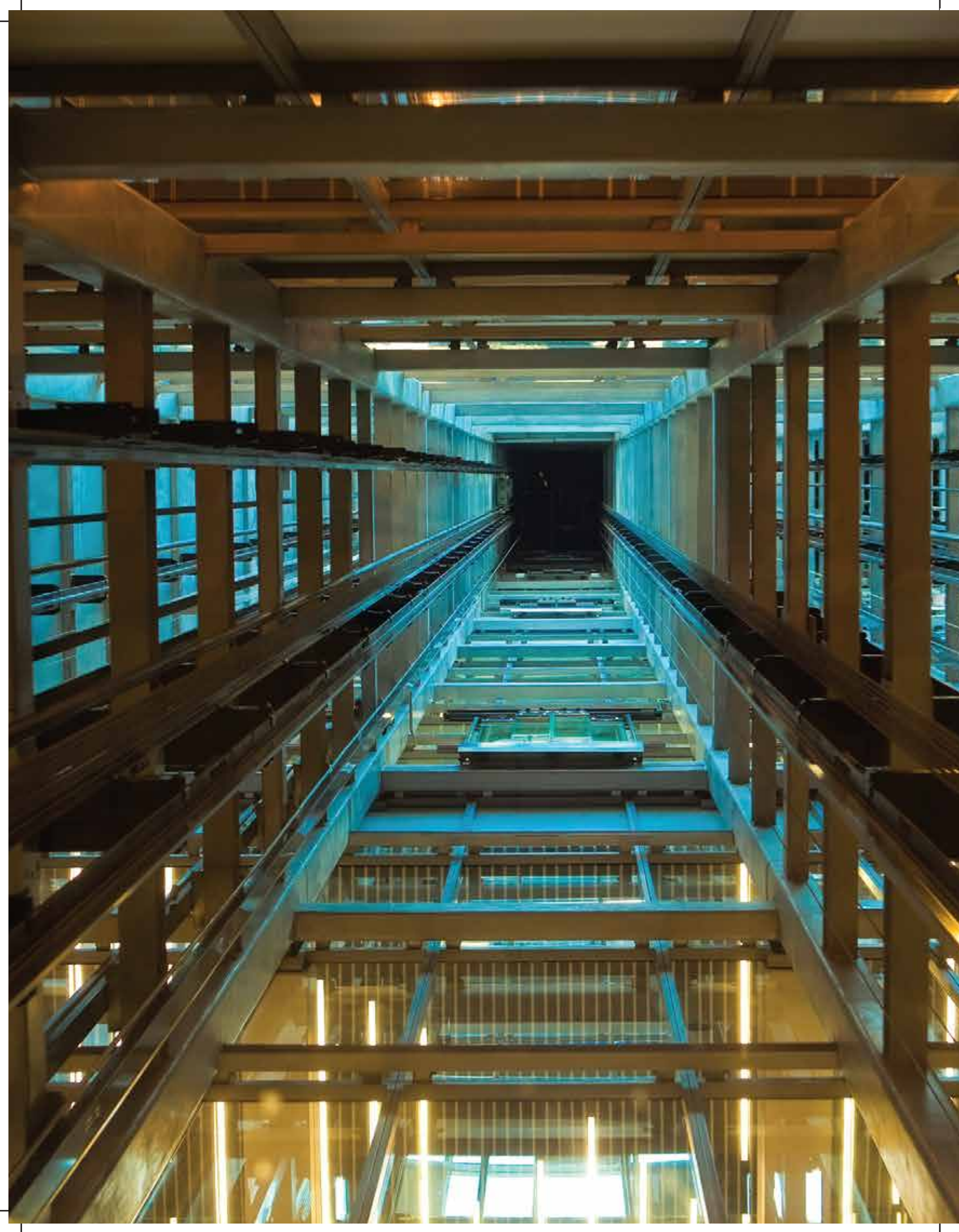
Fermator
(AUTOMATIC DOORS)

SPAIN

Nidec
(PERMANENT MAGNET SYNCHRONOUS MOTORS)

YASKAWA
MOTOMAN ROBOTICS
(VWF DRIVES
FREQUENCY DRIVES)

JAPAN



FOR THE **NEW-AGE** MOBILITY EXPERIENCE

Power Saving & Sleep Mode

Use of PM motors for vertical motion and automatic doors results in over 30% of power saving. The elevator will enter into a sleep mode and all major functions along with lights and fan will switch off within 30 seconds (programmable) of non-usage and resume services with a touch of a button.

We Care for the Immobile & Aged

800mm wide x 2100mm high doors. The door opening/ closing is programmable for slow or fast opening of doors. 800mm doors also facilitate wheel chair access.

Braille Push Button with audible signal for call registration and audible signal when the lift stops at floor level.

Integrated Controller System

Integrated Controllers are smart controllers with scores of special features. The exceptional feature is swift and smooth slow down and swift acceleration of the elevator car resulting in reduced travel time. They are designed with combining logic control, advanced signal processing to increase safety and flexible response.

Closed Loop Technology

EASA® uses a “True Closed Loop Technology” which is part of an electronic revolution that has changed the way modern elevators are designed, manufactured and modernised. A closed-loop system continually monitors the speed and position of the elevator to provide a smooth flawless ride to the elevator.

Serial Communication

EASA® adopts full function CAN BUS Serial Safety Communication in the Elevator. Serial Communication is an important function to have in a high-performance elevator.

STANDARD SPECIFICATIONS

Passengers	4, 6, 8, 10, 13, 16, 20 (68kg/passenger)
Speed	1 meter per second
Duty	Commercial Continuous Duty
Door	800mm, 900mm (700mm for 4 passenger)
Door Height	2100mm
Car Height	2300mm
Travel	30 meters Max
Minimum Shaft Size	1250mm width * 1400mm depth
Car Finish	Pre-coated steel in SS Finish & Powder Coated sheets
Design	Mirror on rear panel
Controller	Microprocessor CE Certified
Machine	Permanent Magnet Synchronous Operation
Power Supply	400/ 415 Volts (3 phase AC)
Car Operating Panel	1000mm with display for Car position
Flooring	Vinyl Flooring (High Density)

STANDARD FEATURES

1. Automatic Rescue Operation: In the event of power failure, the car will travel to the next stop and the doors will open.
2. Overload Device: When the car is overloaded, the car door will remain open with a signal on display.
3. Manual Rescue Operation: The rescue of people trapped in the car is carried out by a Manual Rescue Device.
4. Nudging: If the doors are prevented from closing for a fixed period of time, a buzzer is activated.
5. Door Zone Lock Circuit detection
6. Door Zone Protection

7. Emergency Car Light
8. Full Height Infrared Door Protection
9. Safety Circuit Detection
10. Emergency Alarm
11. Emergency Fireman's Service
12. Door Open Button
13. Door Close Button
14. Collective/ Selective and Down Collective Operations

ADVANCED OPTIONS

1. Big Vision Glass Doors
2. Emergency Telephone System (GSM and Public Wireline Network)
3. Biometric Access
4. Card Reader Access
5. Handrail
6. View Window: 80mm*1000mm view slit in doors
7. Full Height Car Operating Panel
8. Intercom (Press and Speak)
9. Attendant Operation
10. Parking Key Switch
11. Duplex and Triplex Car Group Operation
12. Timed Blind Floor
13. Voice Synthesiser with Customised Music

OPTIONAL FEATURES

1. Call Cancellation: Double press the button to cancel a registered call.
2. Parking Floor: The car will park on a pre-defined floor.
3. Audible Car Call Button: The car buttons give an audio signal when calls are registered.
4. Cabin Light and Ventilation - Auto-off in sleep mode.
5. Maximum Call Registration Limit.
6. Door Open/ Close Time Regulator.

SS FINISH



Cabin Side Walls	Pre-Coated Steel Sheet in SS Finish
Cabin Side Walls	Rose Gold Stripes Horizontal
Cabin Rear Wall	Half Looking Mirror
Flooring	Vinyl Grey (High Density)
Ceiling	Pre-Coated Steel Sheet in SS Finish
Lighting	Down Lit LED Ceiling Lights

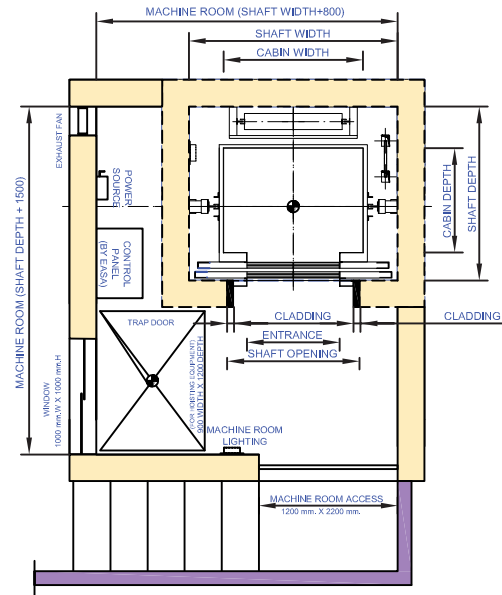
YELLOW FOREST



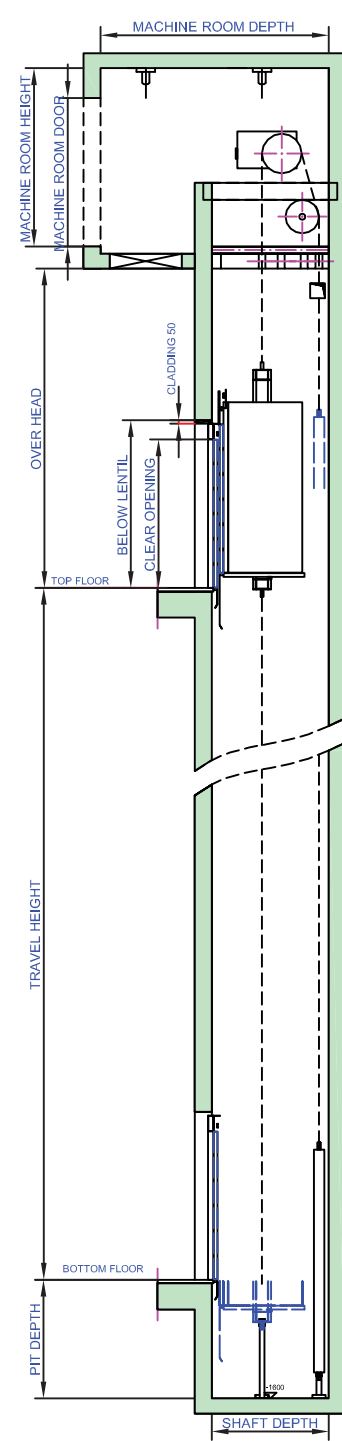
Cabin Side Walls	Pre-Coated Steel Sheet in Yellow Patterned Walls
Cabin Side Walls	SS Black Mirror Strip Vertical
Cabin Rear Wall	Centred Full Height Vertical Looking Mirror
Flooring	Vinyl Light Wood (High Density)
Ceiling	SS Mirror
Lighting	Recessed LED Strips or Down Lit LED Ceiling Lights

Passenger Elevators (With Machine Room)

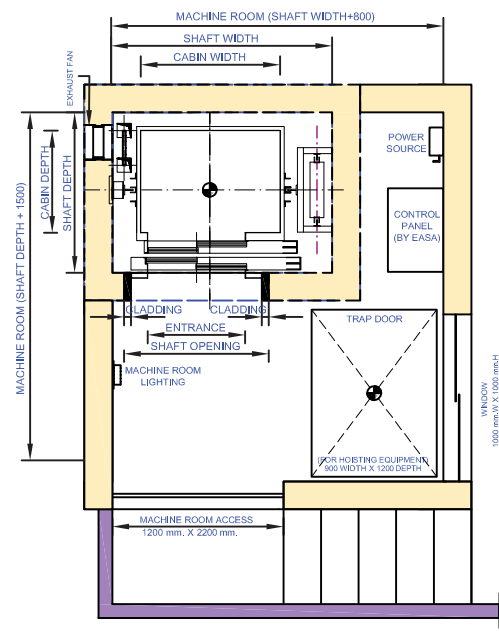
LIFT WELL & MACHINE ROOM PLAN
(Center opening Doors)



LIFT WELL ELEVATION
Side opening



(Telescopic Side Opening Doors)



CAPACITY	PERSONS	Kgs.	CAR INSIDE (Side Opening)		LIFT WELL (Side Opening)		CAR INSIDE (Center Opening)		LIFT WELL (Center Opening)		ENTRANCE	SHAFT OPENING
			WIDTH	DEPTH	WIDTH	DEPTH	WIDTH	DEPTH	WIDTH	DEPTH		
4	272	800	900	1400	1300	800	900	1600	1300	700	1040	
5	340	1000	900	1600	1300	1000	900	1600	1300	700	1040	
6	408	1000	1100	1600	1500	1000	1100	1800	1450	800	1140	
		1100	1000	1700	1450	1100	1000	1800	1400	800	1140	
7	478	1200	1050	1800	1500	1200	1050	1800	1450	800	1140	
8	544	1100	1300	1700	1700	1100	1300	1800	1650	800	1140	
		1200	1200	1800	1600	1200	1200	1800	1600	800	1140	
9	612	1200	1350	1800	1700	1200	1350	1800	1800	800	1140	
		1250	1300	1850	1700	1250	1300	1850	1750	800	1140	
10	680	1350	1350	1950	1850	1350	1350	2000	1800	900	1240	
13	884	1400	1750	2050	2150	1400	1750	2200	2100	1000	1340	
15	1020	1500	1800	2150	2200	1500	1800	2300	2150	1000	1340	
16	1088	1500	1950	2150	2400	1500	1950	2300	2350	1000	1340	

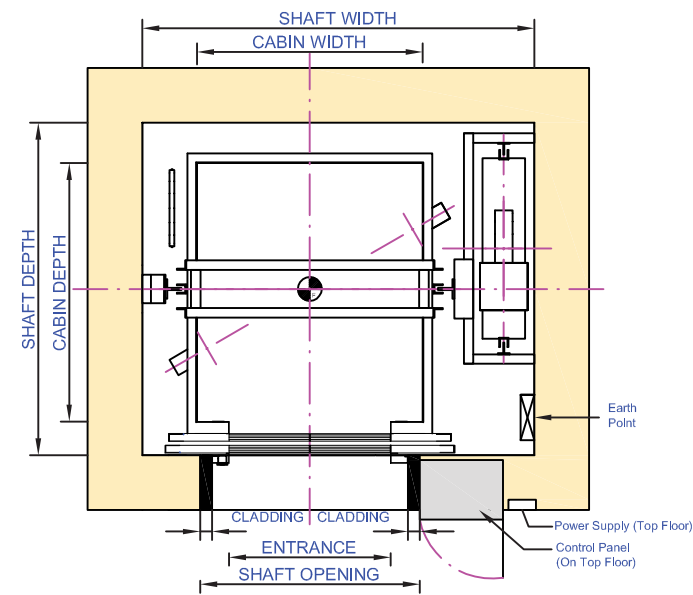
LIFT SPEED METERS/SEC.	PIT DEPTH	OVER HEAD (MINIMUM)	CLEAR(DOOR) OPENING	BELOW LENTIL FROM FINISHED FLOOR LEVEL
0.65 TO 1.0	1600	4300	2000	2260
1.25	1600	4500	2100	2360

NOTE:

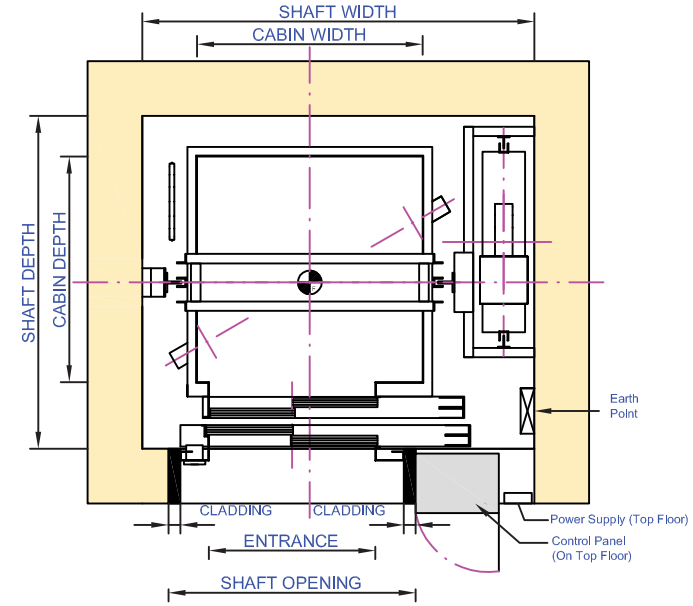
- All dimensions are in millimeters.
- All dimensions are for clear finished lift wells after plastering.
- All walls minimum 150 RCC or 230 brick (hoist way front wall 230 brick preferred).
- RCC machine room structural floor slab 150 thick designed to sustain minimum 1000 Kg./ M² UDL.
- Power supply 400 volts, 3 phase, 4 wires, 50 Hz and 230 volts 1 phase terminating in a MCCB/ELCB switch to be provided by clients.
- For specific requirements our local representative will be happy to work with you in a preparation of working drawings.

Passenger Elevators (Machine Room Less)

LIFT WELL PLAN
(Center opening Doors)



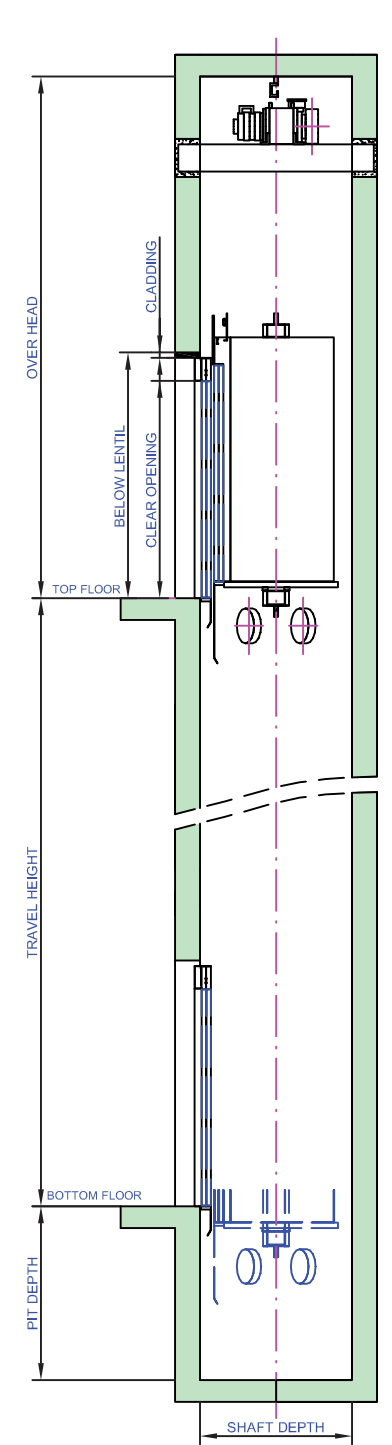
(Telescopic Side Opening Doors)



CAPACITY	PERSONS	Kgs.	CAR INSIDE (Side Opening)		LIFT WELL (Side Opening)		CAR INSIDE (Center Opening)		LIFT WELL (Center Opening)		ENTRANCE	SHAFT OPENING
			WIDTH	DEPTH	WIDTH	DEPTH	WIDTH	DEPTH	WIDTH	DEPTH		
4	272	800	900	1350	1400	800	900	1600	1400	700	1040	
5	340	900	1000	1450	1400	1000	900	1600	1400	700	1040	
6	408	1000	1100	1550	1500	1000	1100	1800	1500	800	1140	
		1100	1000	1650	1450	1100	1000	1800	1450	800	1140	
7	478	1200	1050	1800	1500	1200	1050	1800	1500	800	1140	
8	544	1100	1300	1700	1700	1100	1300	1800	1650	800	1140	
		1200	1200	1800	1600	1200	1200	1800	1550	800	1140	
9	612	1200	1350	1800	1800	1200	1350	1800	1750	800	1140	
		1250	1300	1850	1750	1250	1300	1850	1700	800	1140	
10	680	1350	1350	1900	1800	1350	1350	2000	1750	900	1240	
13	884	1400	1750	2050	2150	1400	1750	2200	2100	1000	1340	
15	1020	1500	1800	2250	2200	1500	1800	2300	2150	1000	1340	
16	1088	1500	1950	2250	2400	1500	1950	2250	2350	1000	1340	

LIFT SPEED METERS/SEC.	PIT DEPTH	OVER HEAD	CLEAR(DOOR) OPENING	BELOW LENTIL FROM FINISHED FLOOR LEVEL
0.7 TO 1.0	1600	4800	2000	2260
1.25	1600	5000	2100	2360

LIFT WELL ELEVATION



NOTE:

- All dimensions are in millimeters.
- All dimensions are for clear finished lift wells after plastering.
- All walls minimum 150 RCC or 230 brick (hoist way front wall 230 brick preferred).
- RCC machine room structural floor slab 150 thick designed to sustain minimum 1000 Kg./ M² UDL.
- Power supply 400 volts, 3 phase, 4 wires, 50 Hz and 230 volts 1 phase terminating in a MCCB/ECCB switch to be provided by clients.
- For specific requirements our local representative will be happy to work with you in a preparation of working drawings.

STANDARD ACCESSORIES

PRE-COATED FINISHES



SS Hairline Finish



Light Grey

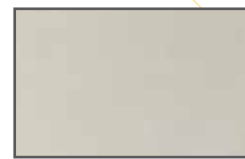


Yellow Forest



Light Wood

FLOORING



Zeus Grey



Light Wood Pattern

OPTIONAL FEATURES & ADVANCED OPTIONS

Emergency Telephone System

- ▶ Public Wireline Network - Through Fixed Landline
- ▶ GSM Based - Through Cellular/ Mobile phones
- ▶ 3 pre-fed numbers with 4-times redialing facility
- ▶ Voice Assisted ARD device & Background music

Car Operating Panel

- ▶ Stainless Steel Hairline Finish
- ▶ Surface Mounted **Full Height (180mm * 1800mm)**

Big Vision Glass Doors with Toughened Glass (Plain or Tinted)

TIP: If the shaft is painted in Dark Grey Matt finish the shaft behind the door is not visible when the car is not at floor level.



Car Operating Panel

- ▶ Stainless Steel Hairline Finish
- ▶ Surface Mounted 180mm x 1000mm



Hallway Landing Operating Panel

- ▶ Stainless Steel Hairline Finish
- ▶ Surface Mounted



Hand Rail

Stainless Steel Hairline Finish
(Model may change)



Card Reader

