



**SMART CITY™ ELITE**

## THE ELITE LIFESTYLE



**SMART CITY™**  
ELEVATORS BY EASA

**EASA Elevators Private Limited**

**Head Office:** No:2, Aravali Complex, Rajiv Colony, Near Rajiv Chowk, NH-8 Gurgaon-122001, Haryana

**Experience Centres**

SCO 32, JLPL Sector 82, Mohali-160082, Punjab

No:3, Aravali Complex, Rajiv Colony, Near Rajiv Chowk, NH-8, Gurgaon-122001, Haryana

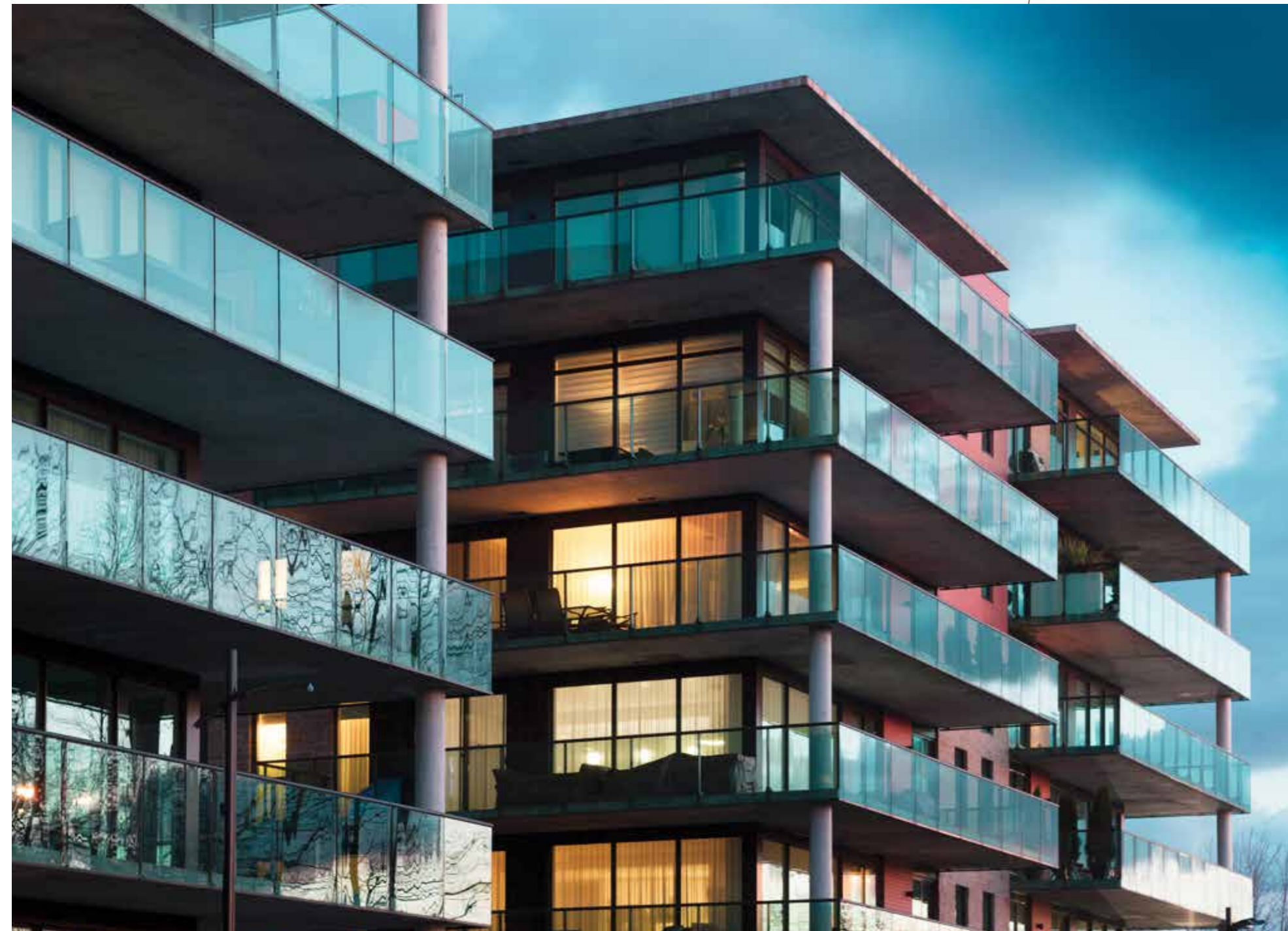
**Manufacturing Facility**

G-1, 603, 604-605, RIICO Industrial Area, Khuskhera Rajasthan-301707

**Sales and Service**

Delhi NCR | Haryana | Uttarakhand | Punjab | Rajasthan | Uttar Pradesh | Himachal Pradesh | Jammu & Kashmir

*Smart it is!*



## SMART CITY ELITE

The Smart City Elite was thoughtfully-designed keeping abreast with the new-age technology and lifestyles.

An elevator is more than just a mode of transportation, it's an important part of our home and office today, hence the elevator should have its own character, its own personality and it should make a statement!

Moreover, we consider that the elevator marks the entrance to each level of a home or an office. Since all homes and offices are designed with different styles, why shouldn't the elevator be styled and designed for every home and office?

Smart City Elite is conceptualised and designed for homes and offices showcasing various lifestyles. Hence the Lifestyle Elevators were designed for Royal, Elegant, Classic, Contemporary or Natural Lifestyles and of course not to miss the Funky and Bold Lifestyle.

*Smart it is!*

# REDEFINING VERTICAL MOBILITY WITH SMART SOLUTIONS



**Efficiency:** Compact and reliable, Permanent Magnet Synchronous Motors are the order of day! These highly efficient gearless machines save you a lot of money as they consume less power and are eco-friendly.



**Space:** Only EASA® designs elevators for spaces as small as 1250mm wide shafts. A treat for architects and home owners. And moreover, if you do not want to block spaces and light with civil shafts, EASA® offers a self-supporting modern steel structure.



**Ride:** Integrated controllers for smooth start and smooth stop ensure fine ride quality and saving too.



**Reliability:** ISO certified factory and life time services at your door step ensures super reliability.



**Low Maintenance Cost:** The price over 10 years usage determines the overall price of the elevator. Low cost of maintenance is passed to the customers advantage by incorporating robust and maintenance-free designs.



**Mobility:** All EASA® lifts are designed with extra wide door opening and programmable door opening time. Audible braille push buttons and audible signals are some very valuable features when the lift reaches a floor level.





## FOR THE NEW-AGE MOBILITY EXPERIENCE

### Power Saving & Sleep Mode

Use of PM motors for vertical motion and automatic doors result in over 30% of power saving. The elevator will enter into a sleep mode and all major functions along with lights and fan will switch off within 30 seconds (programmable) of non-usage and resume services with a touch of a button.

### We Care for the Immobile & Aged

800mm wide x 2100mm high doors. The door opening/ closing is programmable for slow or fast opening of doors. 800mm doors also facilitate wheel chair access.

Braille Push Button with audible signal for call registration and audible signal when the lift stops at floor level.

### Integrated Controller System

Integrated Controllers are smart controllers with scores of special features. The exceptional feature is swift and smooth slow down and swift acceleration of the elevator car resulting in reduced travel time. They are designed with combining logic control, advanced signal processing to increase safety and flexible response.

### Closed Loop Technology

EASA® uses a “True Closed Loop Technology” which is part of an electronic revolution that has changed the way modern elevators are designed, manufactured and modernised. A closed-loop system continually monitors the speed and position of the elevator to provide a smooth flawless ride to the elevator.

### Serial Communication

EASA® adopts full function CAN BUS Serial Safety Communication in the Elevator. Serial Communication is an important function to have in a high-performance elevator.

## STAINLESS STEEL



Cabin Side Walls	Stainless Steel hairline & Rose Mirror strips
Cabin Rear Wall	Half Looking Mirror
Flooring	Vinyl Grey (High Density)
Ceiling	Stainless Steel & Rose Mirror strips
Lighting	LED Down lit Ceiling Lights

## DARK WOOD



Cabin Side Walls	Pre-Coated Steel Sheet in Dark Wood Patterned Walls
Cabin Rear Wall	Half Mirror with Brass finish Hand Rail
Flooring	Vinyl Light Wood
Ceiling	Bronze Stainless Steel Mirror
Lighting	LED Down lit Ceiling Lights

Note: Glass door in the picture is optional

# COFFEE BEAN



Cabin Side Walls	Pre-Coated Steel Sheet Coffee Bean Patterned Walls
Cabin Rear Wall	Two Full Height Looking Mirror on Rear Wall
Flooring	Vinyl (High Density)
Ceiling	Patterned Bronze Stainless Steel Mirror
Lighting	Indirect cove and down lightings

Note: View window in the picture is optional

# SATVARIO



Cabin Side Walls	Pre-coated Steel Sheets with Stainless Steel Strips
Cabin Rear Wall	Half Looking Mirror with SS finish Hand Rail
Flooring	Swiss Carrera Marble
Ceiling	Stainless Steel Mirror
Lighting	Indirect cove lightings
<b>Note: Glass door in the picture is optional</b>	



## STANDARD SPECIFICATIONS

Passengers	4, 6, 8, 10, 13, 16, 20 (68kg/passenger)
<b>Speed</b>	<b>1 meter per second</b>
Duty	Commercial Continuous Duty
<b>Door</b>	<b>800mm, 900mm (700mm for 4 passenger)</b>
Door Height	2100mm
<b>Car Height</b>	<b>2350mm</b>
Travel	30 meters Max
<b>Minimum Shaft Size</b>	<b>1250mm width x 1400mm depth</b>
Car Finish	Stainless Steel (304), Dark Wood & Light Wood, Coffee Bean & Satvario
Hand Rail	Stainless steel, Brass & SS Mirror
Design	Mirror on rear panel
Controller	Microprocessor based CE Certified
Machine	Permanent Magnet Synchronous Operation
Power Supply	400/ 415 Volts (3 phase AC)
Car Operating Panel	1000mm with display for car position
Flooring	Vinyl High Density

## STANDARD FEATURES

1. Automatic Rescue Operation: In the event of power failure, the car will travel to the next stop and the doors will open.
2. Overload Device: When the car is overloaded, the car door will remain open with a signal on display.
3. Manual Rescue Operation: The rescue of people trapped in the car is carried out by a Manual Rescue Device.
4. Nudging: If the doors are prevented from closing for a fixed period of time, a buzzer is activated.
5. Door Zone Lock Circuit Detection
6. Door Zone Protection

7. Emergency Car Light
8. Full Height Infrared Door Protection
9. Safety Circuit Detection
10. Emergency Alarm
11. Emergency Fireman's Service
12. Collective/ Selective and Down Collective Operations

## ADVANCED OPTIONS

1. Big Vision Glass Doors
2. View Window: 80mm x 1000mm view slit in doors
3. Full Height Car Operating Panel
4. Emergency Telephone System (GSM and Public Wireline Network)
5. Attendant Operation
6. Biometric Access
7. Card Reader Access
8. Parking Key Switch
9. Duplex and Triplex Car Group Operation
10. Timed Blind Floor
11. Voice Synthesiser with Customised Music
12. Intercom (Press and Speak)

## OPTIONAL FEATURES

1. Call Cancellation: Double press the button to cancel a registered call.
2. Parking Floor: The car will park on a pre-defined (programmable) floor.
3. Audible Car Call Button: The car buttons give an audio signal when calls are registered.
4. Cabin Light and Ventilation - Auto-off in sleep mode.
5. Maximum Call Registration Limit (Programmable).
6. Door Open/ Close Time Regulator (Programmable).



## STANDARD ACCESSORIES

### CABIN WALLS



Stainless Steel  
Hairline Finish



Dark Wood  
Pre-Coated

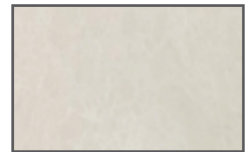


Satvario  
Pre-Coated



Coffee Bean  
Pre-Coated

### FLOORING



Marble  
Siberian White



Light Wood



Marble  
Swiss Carrera



Marble  
Polaris

### Hand Rail

- ▶ Stainless Steel
- ▶ Bronze Flat Rail

### Car Operating Panel

- ▶ SS Mirror ▶ SS Bronze
- ▶ Surface Mounted 160mm x 1000mm  
Without Emergency Phone/ Intercom



### Hallway Landing Operating Panel

- ▶ Surface Mounted



## OPTIONAL FEATURES & ADVANCED OPTIONS

### Emergency Telephone System

- ▶ Public Wireline Network - Through Fixed Landline
- ▶ GSM Based - Through Cellular/ Mobile phones
- ▶ 3 pre-fed numbers with 4-times redialing facility
- ▶ Voice Assisted ARD device & Background music



### Car Operating Panel

- ▶ Stainless Steel Hairline Finish
- ▶ Surface Mounted **Full Height (160mm x 1800mm)**



### Big Vision Glass Doors with Toughened Glass (Plain or Tinted)

TIP: If the shaft is painted in Dark Grey Matt finish the shaft behind the door is not visible when the car is not at floor level.

### Card Reader

