

PASSENGER ELEVATORS



SMART CITY
ELEVATORS BY EASA

EASA Elevators Private Limited

Head Office

No: 2, Aravali Complex, Rajiv Colony, Near Rajiv Chowk, NH-8 Gurgaon-122001, Haryana.

Experience Centres

SCO 32, JLPL Sector 82, Mohali-160082, Punjab.

No. 3, Aravali Complex, Rajiv Colony, Near Rajiv Chowk, NH-8, Gurgaon-122001, Haryana.

Branch Offices

A-15, Sector 3, Noida - 201301, India

4F-25, 4th Floor, Mahima Trinity Mall, Swej farm Road Sodala, Jaipur-3 02019

Industrial Power Pvt. Ltd.: New Plaza, Putalisadak, Kathmandu, Nepal.

Phone: 01- 4517264, 01-5900262, DTS: 01 5908508/09, +977 982 882 4858, +91 971 600 8050 | Email: aexpgrp1@gmail.com

Manufacturing Facility

G-1, 603, 604-605, RIICO Industrial Area, Khuskhera, Rajasthan-301707

Sales and Service

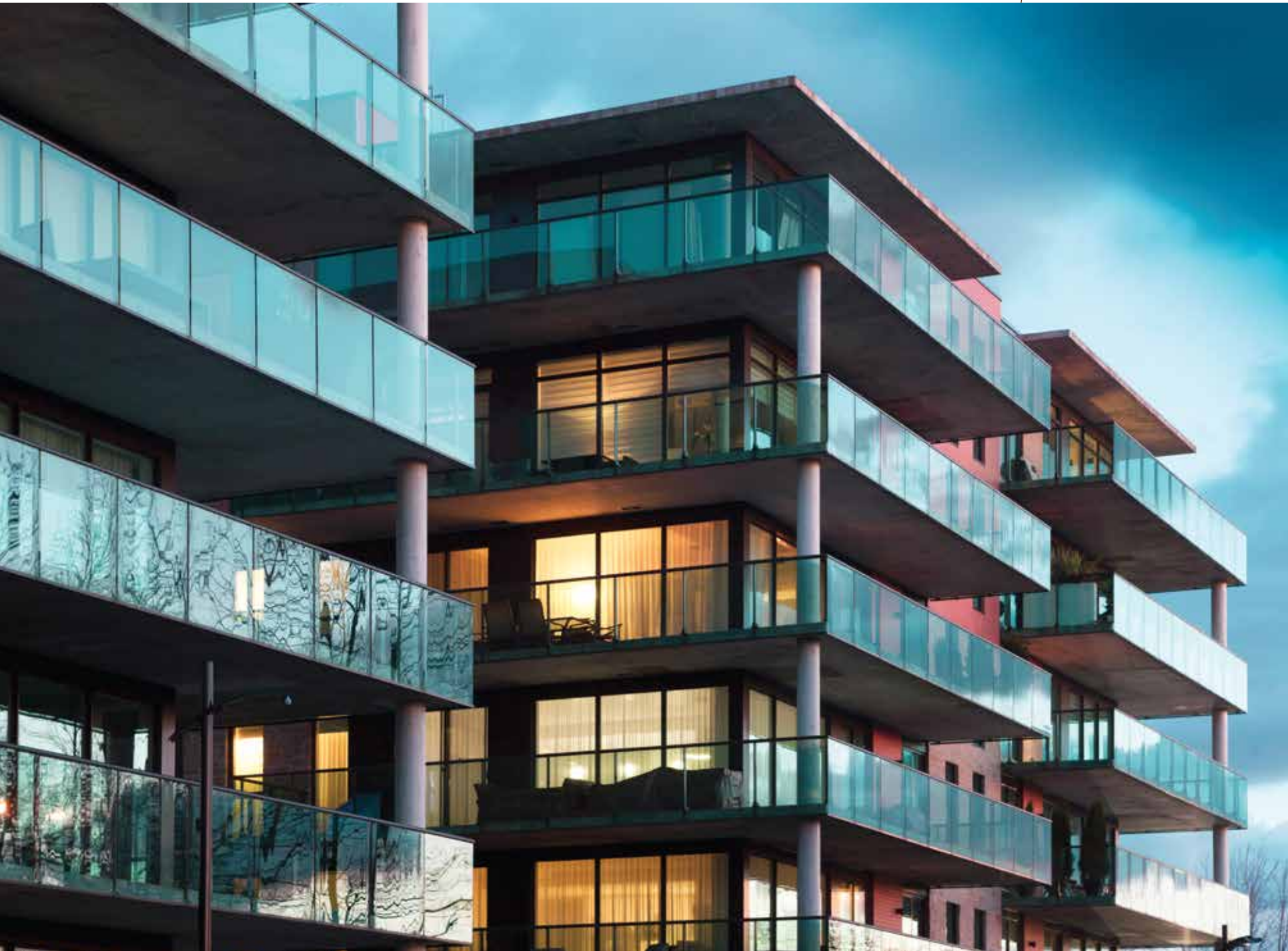
Delhi NCR | Haryana | Uttarakhand | Punjab | Rajasthan | Uttar Pradesh | Himachal Pradesh | Jammu & Kashmir

Contact

+91 9667793372 for Delhi | +91 9667793373 for Haryana | +91 9667793374 for Punjab

MANHATTAN FOYER | PARISIAN BOULEVARD

Smart it is!



SMART CITY ELEVATORS

The Smart City Elevators was thoughtfully-designed keeping abreast with the new-age technology and lifestyles.

An elevator is more than just a mode of transportation, it's an important part of our home and office today, hence the elevator should have its own character, its own personality and it should make a statement!

Moreover, we consider that the elevator marks the entrance to each level of a home or an office. Since all homes and offices are designed with different styles, why shouldn't the elevator be styled and designed for every home and office?

Smart City Elevators is conceptualised and designed for homes and offices showcasing various lifestyles. Hence the Lifestyle Elevators were designed for Royal, Elegant, Classic, Contemporary or Natural Lifestyles and of course not to miss the Funky and Bold Lifestyle.

Smart it is!

REDEFINING VERTICAL MOBILITY WITH SMART SOLUTIONS



Efficiency: Compact and reliable, Permanent Magnet Synchronous Motors are the order of day! These highly efficient gearless machines save you a lot of money as they consume less power and are eco-friendly.



Space: Only EASA® designs elevators for spaces as small as 1250mm wide shafts. A treat for architects and home owners. And moreover, if you do not want to block spaces and light with civil shafts, EASA® offers a self-supporting modern steel structure.



Ride: Integrated controllers for smooth start and smooth stop ensure fine ride quality and saving too.



Reliability: ISO certified factory and life time services at your door step ensures super reliability.



Low Maintenance Cost: The price over 10 years usage determines the overall price of the elevator. Low cost of maintenance is passed to the customers advantage by incorporating robust and maintenance-free designs.



Mobility: All EASA® lifts are designed with extra wide door opening and programmable door opening time. Audible braille push buttons and audible signals are some very valuable features when the lift reaches a floor level.





FOR THE NEW-AGE MOBILITY EXPERIENCE

Power Saving & Sleep Mode

Use of PM motors for vertical motion and automatic doors result in over 30% of power saving. The elevator will enter into a sleep mode and all major functions along with lights and fan will switch off within 30 seconds (programmable) of non-usage and resume services with a touch of a button.

We Care for the Immobile & Aged

800mm wide x 2100mm high doors. The door opening/ closing is programmable for slow or fast opening of doors. 800mm doors also facilitate wheel chair access.

Braille Push Button with audible signal for call registration and audible signal when the lift stops at floor level.

Integrated Controller System

Integrated Controllers are smart controllers with scores of special features. The exceptional feature is swift and smooth slow down and swift acceleration of the elevator car resulting in reduced travel time. They are designed with combining logic control, advanced signal processing to increase safety and flexible response.

Closed Loop Technology

EASA® uses a “True Closed Loop Technology” which is part of an electronic revolution that has changed the way modern elevators are designed, manufactured and modernised. A closed-loop system continually monitors the speed and position of the elevator to provide a smooth flawless ride to the elevator.

Serial Communication

EASA® adopts full function CAN BUS Serial Safety Communication in the Elevator. Serial Communication is an important function to have in a high-performance elevator.

MANHATTAN FOYER

Glenberry



MANHATTAN FOYER

Glenberry

- Side Panels** Horizontal Coffee bean Checkered Panels
- Rear Panel** Horizontal Coffee bean Checkered Panels
- Rear Panel** Top – Mirror
- Flooring** Marble Red Sparkling
- Ceiling** SS Rose Mirror Single Sheet panel
- Lighting** Back lit with artistic 4 No LED Down Lights
- Push Button** Red touch panels

Glenberry elevator cabin, where the remarkable meets the exquisite

Captivating Glenberry design. Coffee Bean Checkered Panels, creating a unique and visually arresting pattern that exudes charm and character.

MANHATTAN FOYER

Java Lattice



MANHATTAN FOYER

Java Lattice

- | | |
|--------------------|---|
| Side Panels | Vertical Coffee bean
Checked Panels |
| Rear Panel | Vertical Coffee bean
Checked Panels |
| Rear Panel | Vertical full height Looking
Glass on centre |
| Flooring | Roso Levanto
(high Density tile) |
| Ceiling | Laser Cut SS bronze Backlit
Mirror Ceiling |
| Lighting | Back lit with artistic 4 No
LED Down Lights |
| Push Button | Red touch panels |

Java Lattice is sheer sophistication as we unveil its exquisite design.

The term “Java Lattice” implies that the elevator cabin interior design incorporates elements or patterns reminiscent of this style. It’s a way to evoke a sense of uniqueness and cultural influence in the design.

MANHATTAN FOYER

Cast Silver



MANHATTAN FOYER

Cast Silver

- Side Panels** Vertical Hash Silver Panels with SS Black hairline & Mirror stripes
- Rear Panel** Vertical Hash Silver Panels
- Rear Panel** Two Vertical full height Looking Glass on Sides
- Flooring** Grigio Serena (high Density tile)
- Ceiling** Wave Laser Cut Black Backlit Mirror Ceiling
- Lighting** Back lit with artistic 4 No LED Down Lights
- Push Button** Silver crafted SS Car Operating panel with Hairline and Mirror finish

Most awe-inspiring elevator cabins ever conceived.

Prepare to be enchanted as we unveil its remarkable design. Vertical Hash Silver Panels with SS Black sheets adorn the walls, radiating a sense of sophistication and modernity.

MANHATTAN FOYER

Patina Gold



MANHATTAN FOYER

Patina Gold

- Side Panels** Vertical Hash Gold Panels with SS Black hairline & Mirror stripes
- Rear Panel** Vertical Hash Gold Panels
- Rear Panel** Two Vertical full height Looking Glass on Sides
- Flooring** Black Marquina (high Density tile)
- Ceiling** Wave Laser Cut Black Backlit Mirror Ceiling
- Lighting** Back lit with artistic 4 No LED Down Lights
- Push Button** Gold crafted SS Car Operating panel with Hairline and Gold Mirror finish

Breath taking elevator cabins ever designed.

Be enthralled as we reveal its exceptional design. Vertical Hash Gold Patina Panels complemented by SS Black sheets, radiating luxury and refinement.

PARISIAN BOULEVARD

Tan Wood



PARISIAN BOULEVARD

Tan Wood

- | | |
|-----------------------|---|
| Side Panels | Patterned Wood Finish & Vertical Leather buttoned panels |
| Rear Panel | Bottom Half - Patterned Wood Finish |
| Rear Panel | Oval Shape half Looking Glass reflecting the laser cut back lit ceiling |
| Hand Rail | Leather |
| Flooring | Honey Onyx Tile (high Density) |
| Ceiling | Double layered SS Laser Cut |
| Rose Mirror | |
| Lighting | Back lit Ceiling |
| Push Button & Display | SS Bronze HL with SS Bronze Mirror back plate |

Embellished with Patterned Wood Finish and Vertical Leather Buttoned Panels.

A fusion of textures that exudes sophistication and charm. The Parisian Boulevard Tan wood is also a part of our Uber - Ultimate Series

PARISIAN BOULEVARD

Spirited Cognac



PARISIAN BOULEVARD

Spirited Cognac

- Side Panels** Leather Panels with Rose Mirror & Rose Hairline Panels
- Rear Panel** Bottom Half - Horizontal Leather Panel With Rose Mirror panel
- Rear Panel** Top Half Rose Mirror.
- Flooring** Black Antigua Tile (high Density)
- Hand Rail** Leather
- Ceiling** Double layered SS Laser Cut Rose Mirror
- Lighting** Back lit Ceiling reflecting on all 3 mirrored rose panels
- Push Button & Display** Spanish large Black/SS round standalone push buttons

Ultimate luxury. The Parisian Boulevard Spirited Cognac, a part of our Uber - Ultimate Series

EASA has successfully fulfilled the request from architects and designers for an elevator featuring leather elements.

STANDARD SPECIFICATIONS

Passengers	4, 6, 8, 10, 13, 16, 20 (68kg/passenger)
Speed	1 meter per second
Duty	Commercial Continuous Duty
Door	800mm, 900mm (700mm for 4 passenger)
Door Height	2100mm
Car Height	2350mm
Travel	30 meters Max
Minimum Shaft Size	1250mm width x 1400mm depth
Car Finish	Stainless Steel (304), Dark Wood & Light Wood, Coffee Bean & Satvario
Hand Rail	Stainless steel, Brass & SS Mirror
Design	Mirror on rear panel
Controller	Microprocessor based CE Certified
Machine	Permanent Magnet Synchronous Operation
Power Supply	400/ 415 Volts (3 phase AC)
Car Operating Panel	1000mm with display for car position
Flooring	Vinyl High Density

STANDARD FEATURES

1. Automatic Rescue Operation: In the event of power failure, the car will travel to the next stop and the doors will open.
2. Overload Device: When the car is overloaded, the car door will remain open with a signal on display.
3. Manual Rescue Operation: The rescue of people trapped in the car is carried out by a Manual Rescue Device.
4. Nudging: If the doors are prevented from closing for a fixed period of time, a buzzer is activated.
5. Door Zone Lock Circuit Detection
6. Door Zone Protection

7. Emergency Car Light
8. Full Height Infrared Door Protection
9. Safety Circuit Detection
10. Emergency Alarm
11. Emergency Fireman's Service
12. Collective/ Selective and Down Collective Operations

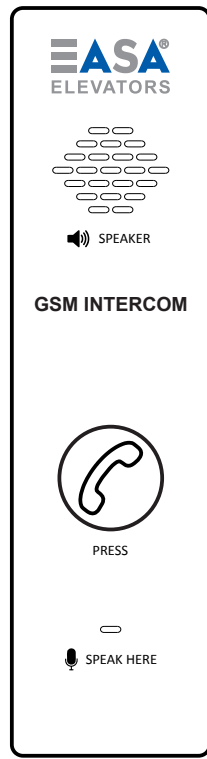
ADVANCED OPTIONS

1. Big Vision Glass Doors
2. View Window: 80mm x 1000mm view slit in doors
3. Full Height Car Operating Panel
4. Emergency Telephone System (GSM and Public Wireline Network)
5. Attendant Operation
6. Biometric Access
7. Card Reader Access
8. Parking Key Switch
9. Duplex and Triplex Car Group Operation
10. Timed Blind Floor
11. Voice Synthesiser with Customised Music
12. Intercom (Press and Speak)

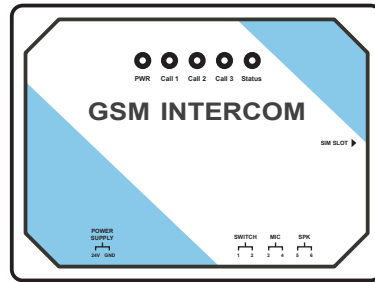
OPTIONAL FEATURES

1. Call Cancellation: Double press the button to cancel a registered call.
2. Parking Floor: The car will park on a pre-defined (programmable) floor.
3. Audible Car Call Button: The car buttons give an audio signal when calls are registered.
4. Cabin Light and Ventilation - Auto-off in sleep mode.
5. Maximum Call Registration Limit (Programmable).
6. Door Open/ Close Time Regulator (Programmable).

ELEVATOR EMERGENCY CALLING SYSTEM



GSM INTERCOM



- a. GSM based through cellular/ mobile network
- b. Public wireline network
- c. 3 pre-fed number with 3-time redialling facility

ACCESS CONTROL

For elevators is a security measure that regulates who can use elevators in a building or facility. It is commonly implemented, where there is a need to restrict elevator access to specific individuals or groups for reasons such as security, safety, or operational control. Here are some common methods and considerations for implementing access control for elevator in LOP & COP :-

RFID based access | Bi-matric based access

PIN Code based | Face reader based



RFID based Access



Bi-matric based access



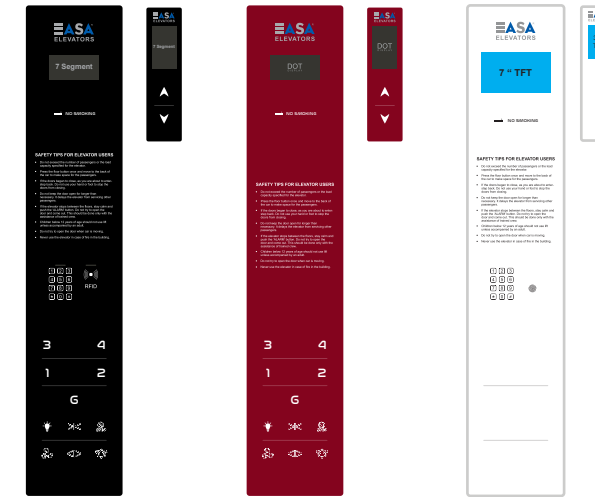
PIN Code based



Face reader based

CAR AND LANDING OPERATING PANELS

Feather Touch Based
(Black, White, Ruby Red)



Surface Mounted Full Length
(SS Hairline, Black Metallic, Gold, etc)



UFO



AUTOMATIC RE-LEVELLING DEVICE

in an elevator system is a safety and convenience feature designed to ensure that the elevator car is properly aligned with the floor when it stops. This technology helps maintain a consistent and level transition between the elevator cabin and the building floor, which is important for passenger comfort and accessibility

VOICE ANNOUNCEMENTS

Elevators often provide voice announcements to inform passengers / users of the elevator's status, floor numbers, and emergency instructions.

