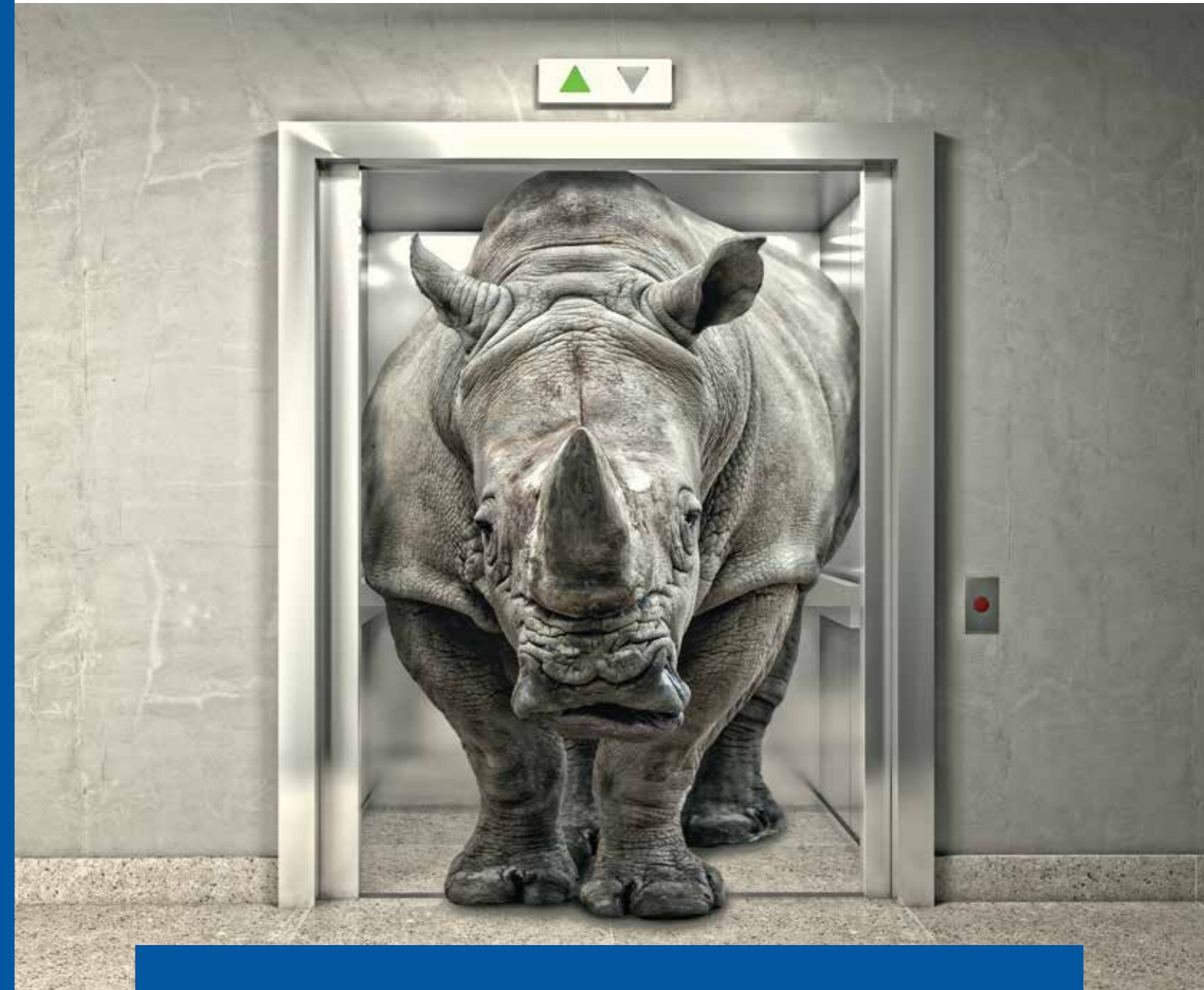


PRESENTING FREIGHT ELEVATORS



EASA Elevators Private Limited

Head Office: No:2, Aravali Complex, Rajiv Colony, Near Rajiv Chowk, NH-8 Gurgaon-122001, Haryana

Experience Centres

SCO 32, JLPL Sector 82, Mohali-160082, Punjab

No:3, Aravali Complex, Rajiv Colony, Near Rajiv Chowk, NH-8, Gurgaon-122001, Haryana

Branch Offices

A-15, Sector 3, Noida - 201301, India

Industrial Power Pvt. Ltd.- New Plaza, Putalisadak Kathmandu, Nepal

Phone: 01- 4517264, 01-5900262, DTS: 01 5908508/09

+977 982 882 4858, +91 971 600 8050 | Email: aexpgrp1@gmail.com

Manufacturing Facility

G-1, 603, 604-605, RIICO Industrial Area, Khuskhera Rajasthan-301707

Sales and Service

Delhi NCR | Haryana | Uttarakhand | Punjab | Rajasthan | Uttar Pradesh | Himachal Pradesh | Jammu & Kashmir

UNMATCHED PERFORMANCE, UNRIVALED ENGINEERING

SINCE 2003 EASA ELEVATORS ALLOWS BUSINESSES TO TRANSPORT LARGE AND HEAVY LOADS SAFELY, QUICKLY AND EFFICIENTLY.

Contact: +91 9667793372 for Delhi | +91 9667793373 for Haryana | +91 9667793374 for Punjab

ABOUT EASA

VISION & VALUE



To be your first choice in designing, supplying, installing, and maintaining the Freight Elevators. We are motivated with technological advances and are keen to supply modern and highly efficient Elevators.

We invest in progress and innovation.

EASA believes in health and safety of our Customers, Employees and Users. We motivate, support, and participate.

CUSTOMER COMMITMENT



Thanks to our qualified team, we can guarantee world class products and work in terms of "Safety & Ride Quality" today.

EASA caters to individual needs of each customer in terms of Installation, Designs, Cabin Interiors, Type of doors and we also create customised products for each project with the best solutions.

MARKET LEADERSHIP



With over three decades of experience in installing Freight Elevators in the Auto Component, Footwear, Food processing, Logistics, Pharma, FMCG, Ceramic, Printing & Packaging, Textile and Moulding Industry EASA has established as a leading Company in the design, manufacturing, sales, and installation of Freight Elevators and Elevators in Steel Structures. EASA has its own manufacturing facility and independent logistic facility at Khushkhera.

INNOVATION & ECO DESIGN



Constant Innovation in Technology with Environment Criteria has resulted in High speed lifts with Low powered Gearless Machines, hence minimising the environmental impact.

SERVICES



A motivated team of engineers, technicians and call centre is pressed into service to ensure a trouble-free operation. We have achieved the highest uptime in the industry. We offer comprehensive Maintenance package at reasonable rates.



Everyday

Over Half a Million People Travel in EASA Passenger Elevators & Over Half a Million Tons of Cargo is Moved in EASA Freight Elevators

THE EASA[®] MILLION MISSION BY 2025

Our mission is to
'Move Two Million People & One Million Tons of Cargo'
Daily in EASA Elevators

MAKING THE WORLD FLOW EFFORTLESSLY

HOW TO CHOOSE YOUR FREIGHT ELEVATOR

A Freight Elevator has to be carefully chosen as it is meant to serve you for decades, it's just not only for its Size, Capacity, Speed and Orientation but also should be compatible as per Indian Standards (IS 14665), Government norms and Lift rules in force. Basically, a Traction Drive Counter-Weight System - Use of multiple ropes & out of balance loads is the norm.

CAPACITY, SIZE AS PER IS & INTERNATIONAL NORMS



The Weight and Volume of the material to be transported at ONE TIME will determine the capacity. General thumb rule is 453 Kg/Sq. mtr of floor area of the cabin is the prescribed capacity of the elevator as IS Specifications. However, a 5-10% variation is acceptable.

WEIGHT & VOLUME



The volume of goods (trolley size/ no. of pallets) to be transported at ONE TIME will determine the size of the car/ cabin.

First calculate the amount of material that is to be lifted both in terms of Weight & Volume per day and per hour movement of the material.

Consider the following while calculating the Capacity:

- i. Time taken to load, and time taken to unload the material
- ii. Time taken for elevator travel between the bottom most to topmost floor.

LIFTING SPEED



The general speed for Freight Elevators is 0.50 Meters/second (30 meters/minute). Higher or Customized speeds is an option.

LOADING & ORIENTATION



The Car can be loaded from one side and unloaded from another side, please choose from any options.

Front Opening- Single side opening

Front & Rear Opening-180 degrees -Two side opening

Front & Side Opening- 90 degrees -Two side opening

Front, Rear & Side Opening- 180 & 90 degrees - Three side opening

MACHINE ROOM OR MACHINE ROOM LESS



Most installations are now Machine room Less type. However, please check for convenience, if your building height permits and you have an option to provide machine rooms on top of the shaft.

Machine room less elevators save construction cost hence most elevators are now fitted with Gearless Machines which employ latest modern technologies for enhanced performance.



HOW TO CHOOSE YOUR FREIGHT ELEVATOR

TYPES OF DOORS



Manual Doors or Automatic Doors are fitted with electrical and Mechanical interlocks.

Automatic Doors are used for air-conditioned shop floors or clean room areas or where lift rules demand so.

Manual Doors are employed for very rough and tough usage opt for Doors with Doors frames in both Manual Doors or Automatic Doors.

INTERIORS



STAINLESS STEEL: Stainless Steel interiors are a standard for industries like Food processing, Pharmaceuticals or Industries that require a clean room standard or as per WHO guidelines.

MILD STEEL: Mild Steel surface coated (Painted or Power coated) sheets are a general standard for the industry.

VARIABLE FREQUENCY VARIABLE VOLTAGE (VVVF DRIVES)



VVVF Drives are commonly used for soft, start & stop and more accurate floor levelling facility. You also save 30% energy (electrical Consumption) and improved mechanical efficiency.

SAFETY



Over speed Governors along with the Safety Brake stop the free fall of an elevator when the movement of the Car is over a speed of 20% of the rated speed of the elevator.

Other important safety is of a mechanical interlock and electrical interlock to prevent cabin movement when the door is open.

Many other safeties like reduced operational Voltage, limiting the elevator “up or down movement” from bottom most or topmost floor. Buffer springs, emergency stop, battery backed alarm and light etc are mandatory.

ADVANCED OPTIONAL FEATURES & BENEFITS



Multiple Guiding System

Overload Device (Preferred Option)

Automatic Rescue Device (Mandatory in some States)

Self-Leveling Device

Emergency Calling & IOT Functions

FREIGHT ELEVATORS



Stainless Steel Interiors



Elevator with Manual Door



Power Coated Interiors



Elevator with Automatic Door



Elevator with Auto & Manual Door



CLIENTELE

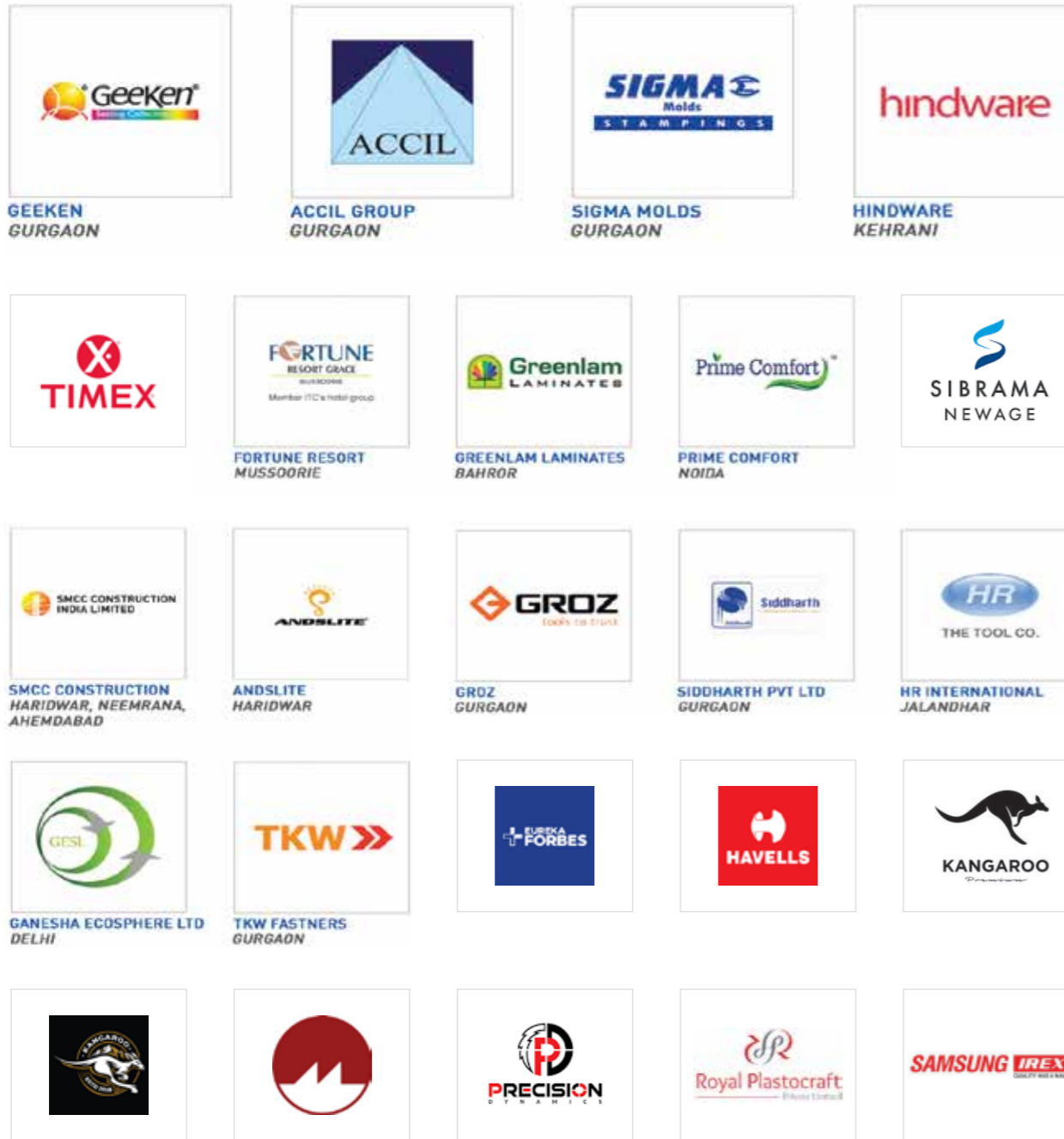
FREIGHT ELEVATOR AUTO COMPONENTS INDUSTRY

 HERO MOTORCORP LTD GURGAON, YADDARA, NEEMRANA, DHARUHERA, KUKAS-JAIPUR, HARIDWAR	 MARUTI SUZUKI BUJARAT	 JBM GROUP LTD GURGAON, RUDRAPUR, AHMEDABAD, FARIDABAD	 SKH YTECH LTD GURGAON AHMEDABAD	 NBC Textile solutions NATIONAL ENGINEERING INDUSTRIES GURGAON	 BAJAJ MOTORS RUDRAPUR, BINOLA, GURGAON	 ANAND GROUP
 MAXXIS RUBBER (INDIA) PVT LTD AHMEDABAD	 ASAHI INDIA GLASS LTD BAWAL, ROORKEE	 NEEL METAL PRODUCT GURGAON, HARIDWAR RUDRAPUR	 SKH METAL LTD GURGAON AHMEDABAD	 UNO MINDA INDUSTRIES DELHI GURGAON	 MOTHERSON SUMI SYSTEM LTD GURGAON, INDORE	 ROCKMAN INDUSTRIES HARIWAR BAWAL
 NIPMAN AUTOMOTIVE SOLUTIONS NIPMAN FASTENER INDUSTRIES BAWAL, HARIDWAR	 AUTOFIT LTD GURGAON, HARIDWAR DHARUHERA	 SUNBEAM AUTO PVT. LTD. GURGAON KHUSHKHERA	 SATYAM SATYAM AUTO COMPONENTS LTD GURGAON, DHARUHERA, HARIDWAR	 NGK SPARK PLUGS ASK AUTOMOTIVE LTD GURGAON	 SANDHAR SANDHAR TECHNOLOGIES LTD GURGAON, HARIDWAR, IMT-MANESAR	
 INDO AUTOTECH LIMITED INDO AUTOTECH LTD FARIDABAD GURGAON, TAPUKALA	 RAMCO	 FIEM LIGHT UP THE WORLD FIEM INDUSTRIES LTD SONPAT KHUSHKHERA	 A.S. INDUSTRIES HARIDWAR GURGAON	 ROOP Roop Polymers ROOP POLYMERS LTD GURGAON RUDRAPUR	 TITAN ENGINEERING SOLUTIONS GURGAON	 Omfa Rubbers Ltd. OMFA RUBBERS NOIDA RUDRAPUR
 JAYANTI JAYANTI RUBBER INDUSTRIES GURGAON	 KRISHNA KRISHNA GROUP GURGAON AHMEDABAD	 ESCORTS	 HONDA	 UNO MINDA MINDA INDUSTRIES LIMITED	 MORESCO Moresco	 Subros
 VICTORIA TOOL ENGINEERS	 SONA BLW	 DENSO	 SATYAM	 MINDA	 MAHAVIR	 ma'op

FREIGHT ELEVATOR FOOTWEAR INDUSTRY

 CAMPUS HARIDWAR	 Lakhani SHOES Lakhani Armaan Group LAKHANI GROUP FARIDABAD HARIDWAR	 APL FOOTWEAR APL FOOTWEAR SONIPAT	 RELAXO RELAXO BHIWADI, HARIDWAR BAHADURGARH		
------------------------	--	--	--	--	--

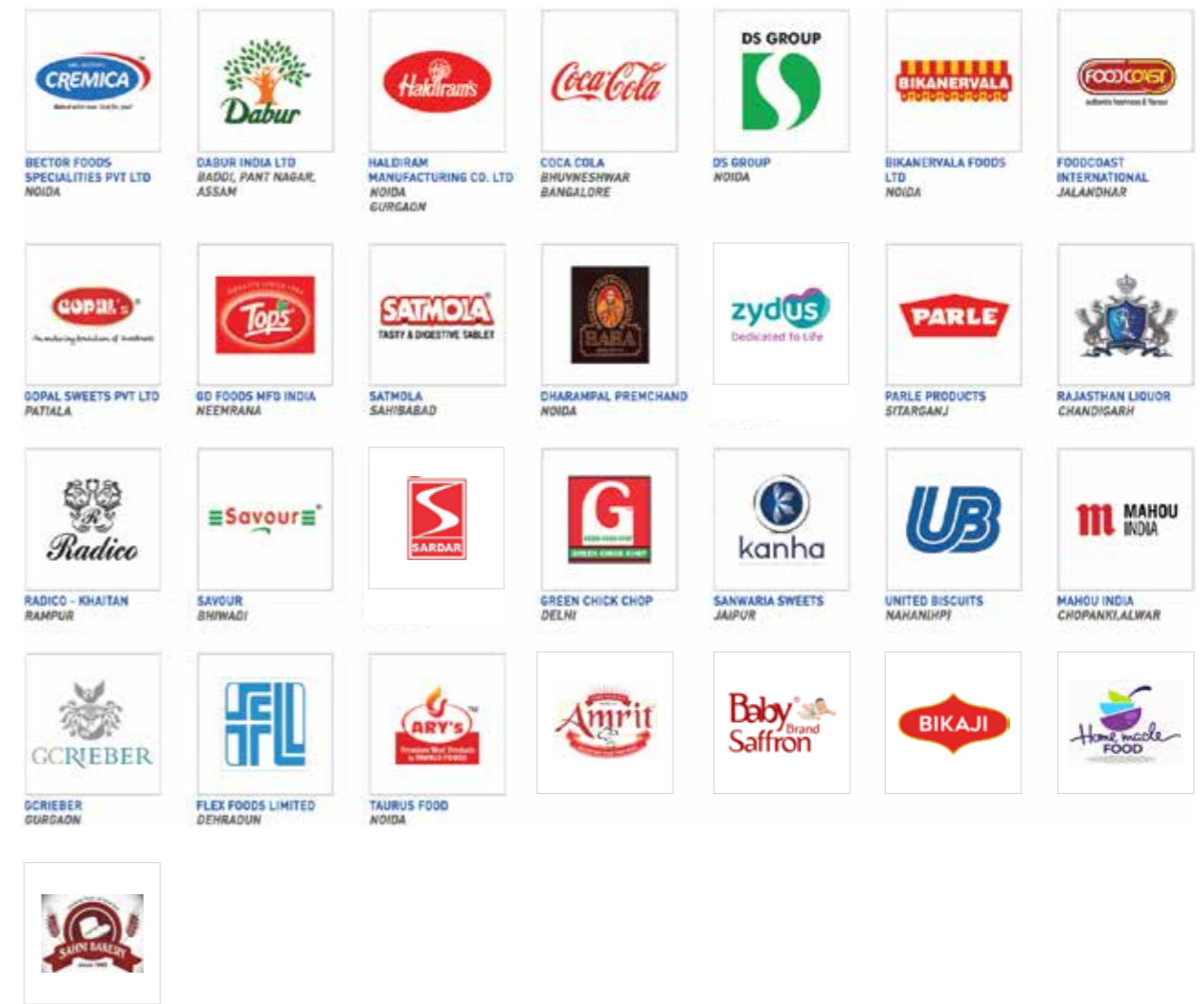
FREIGHT ELEVATOR
CONSTRUCTION/BUILDING MATERIAL/ INTERIOR/ HOUSEHOLD INDUSTRY



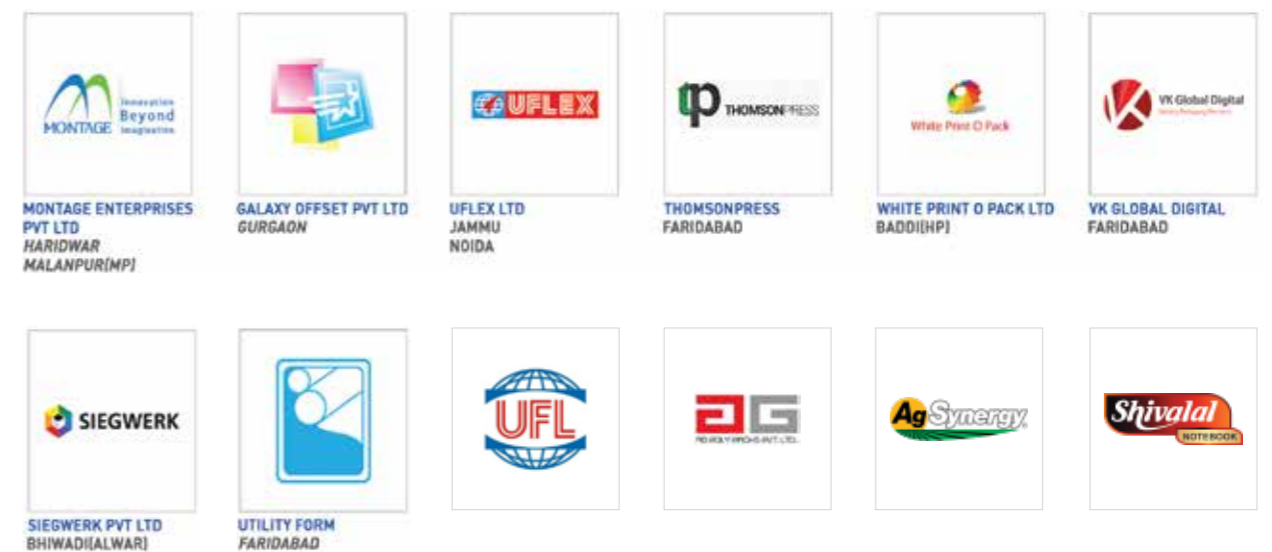
FREIGHT ELEVATOR
LOGISTICS INDUSTRY



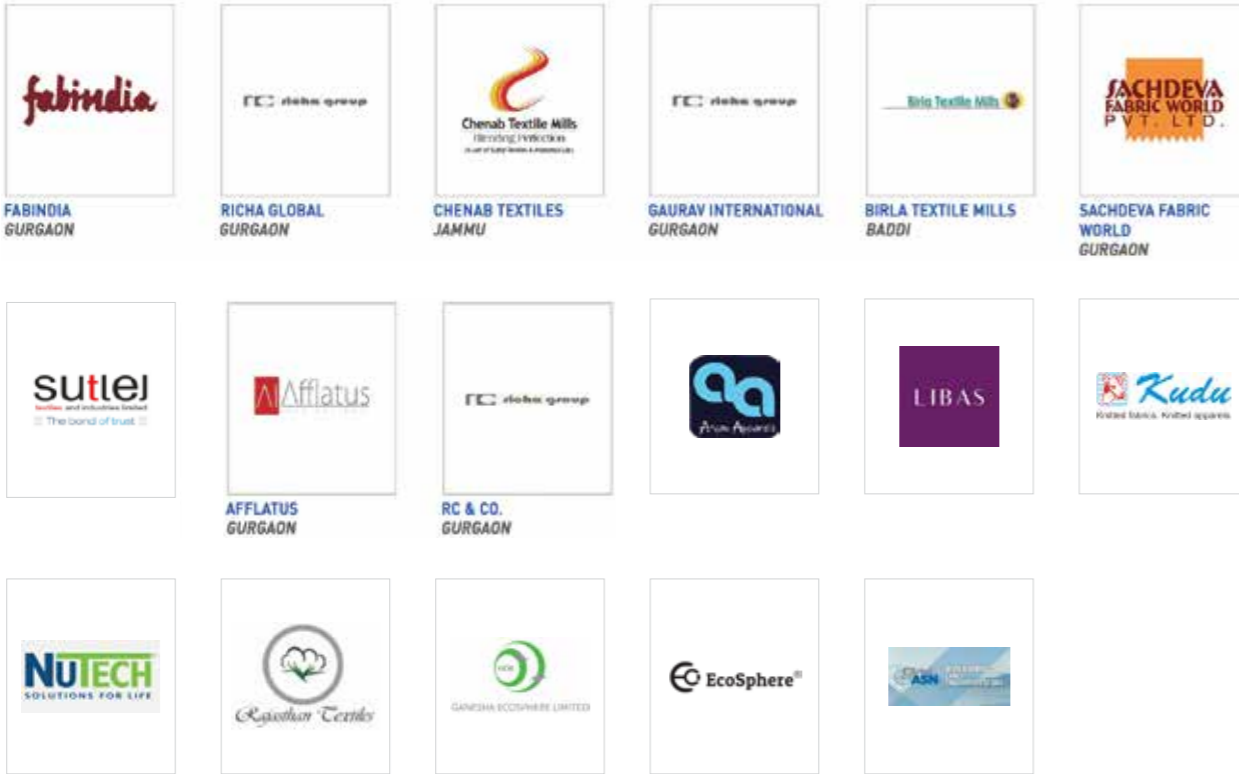
FREIGHT ELEVATOR
FOOD & BEVERAGES INDUSTRY



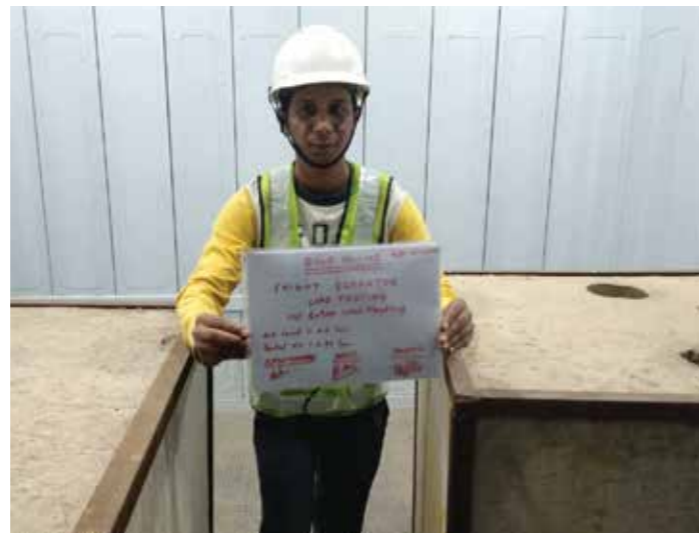
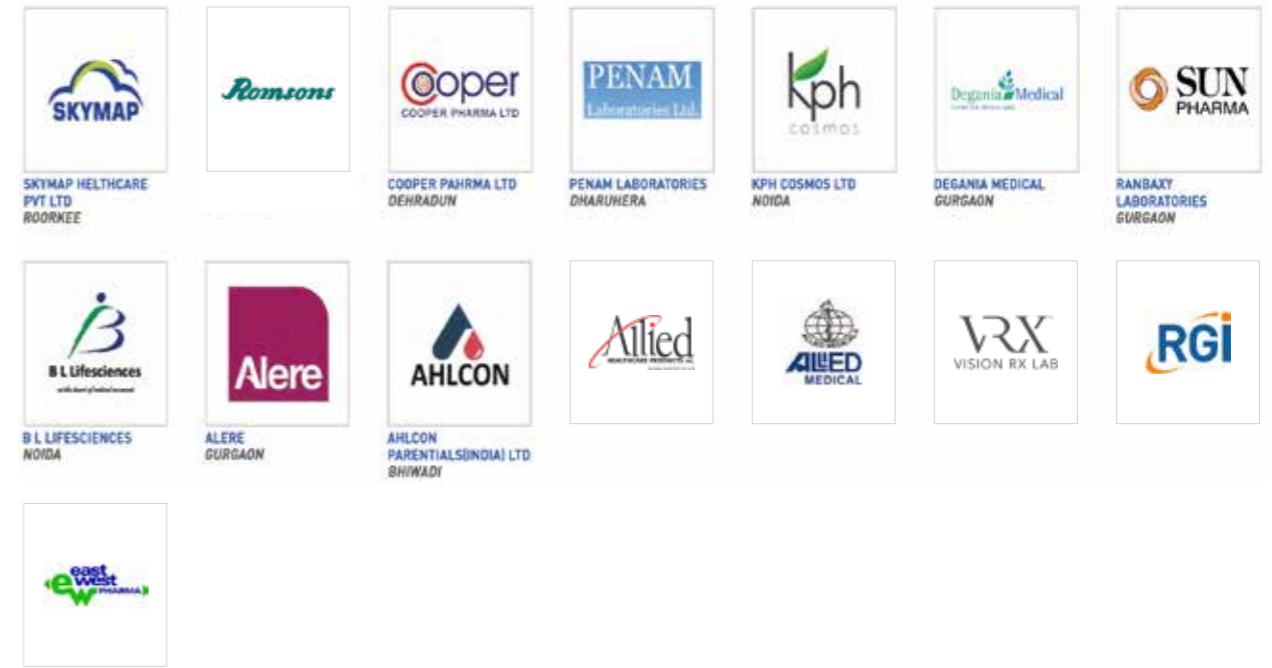
FREIGHT ELEVATOR
PRINTING & PACKAGING INDUSTRY



**FREIGHT ELEVATOR
TEXTILE INDUSTRY**

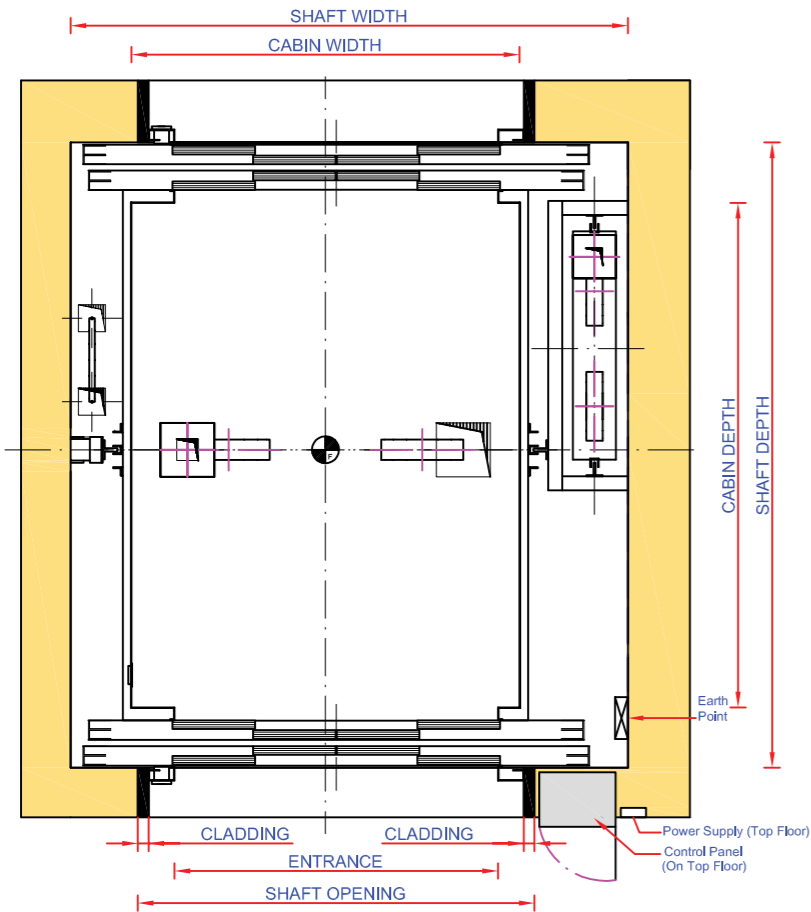


**FREIGHT ELEVATOR
PHARMA INDUSTRY**

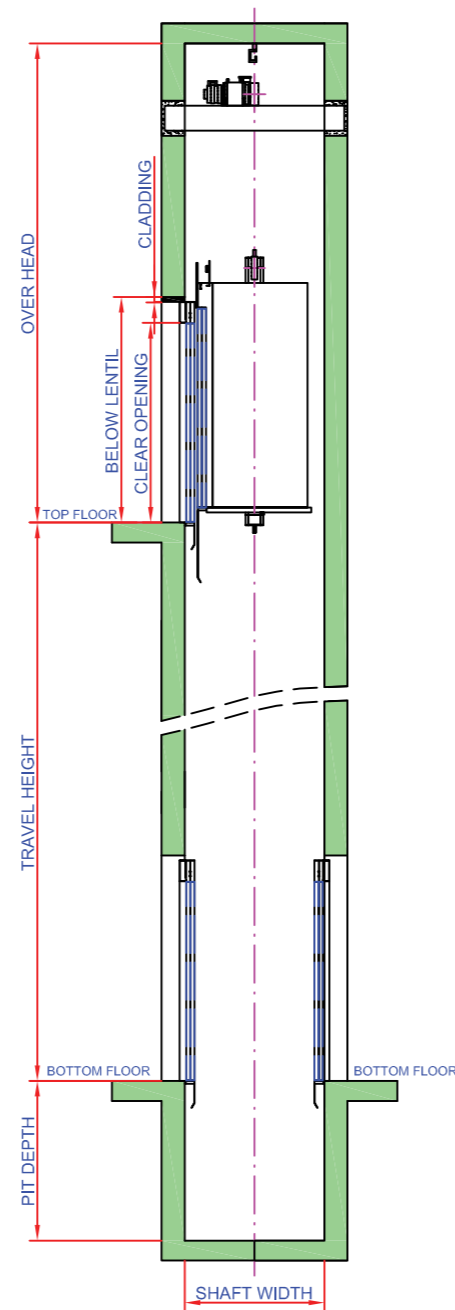


FREIGHT ELEVATOR MACHINE ROOM LESS

LIFT WELL PLAN



LIFT WELL ELEVATION



AUTOMATIC DOORS:

CAPACITY	CAR INSIDE		LIFT WELL		ENTRANCE	
Kgs.	WIDTH	DEPTH	WIDTH	DEPTH	WIDTH	DEPTH
525	1100	1200	1875	1750	1000	2000
750	1200	1600	1950	2150	1000	2000
1050	1400	1800	2200	2350	1200	2000
1500	1700	2000	2550	2550	1500	2000
2025	1800	2500	2750	3050	1600	2000
2550	2000	2600	3000	3150	1800	2000
3000	2200	3000	3250	3550	2000	2000
3525	2200	3500	3250	4050	2000	2100
4050	2500	3500	3550	4050	2200	2100
5025	2600	4000	3650	4550	2300	2100

NOTE: * 50 mm. CLADDING ON EITHER SIDE CONSIDERED

MANUALLY OPERATED DOORS:

CAPACITY	CAR INSIDE		LIFT WELL		ENTRANCE	
Kgs.	WIDTH	DEPTH	WIDTH	DEPTH	WIDTH	HEIGHT
525	1100	1200	1800	1600	1000	2000
750	1200	1600	1900	2000	1000	2000
1050	1400	1800	2100	2200	1200	2000
1500	1700	2000	2400	2400	1500	2000
2050	1800	2500	2550	2900	1600	2000
2550	2000	2600	2800	3000	1800	2000
3000	2200	3000	3000	3400	2000	2000
3525	2200	3500	3000	3900	2000	2100
4050	2500	3500	3300	3900	2200	2100
5025	2600	4000	3400	4400	2300	2100

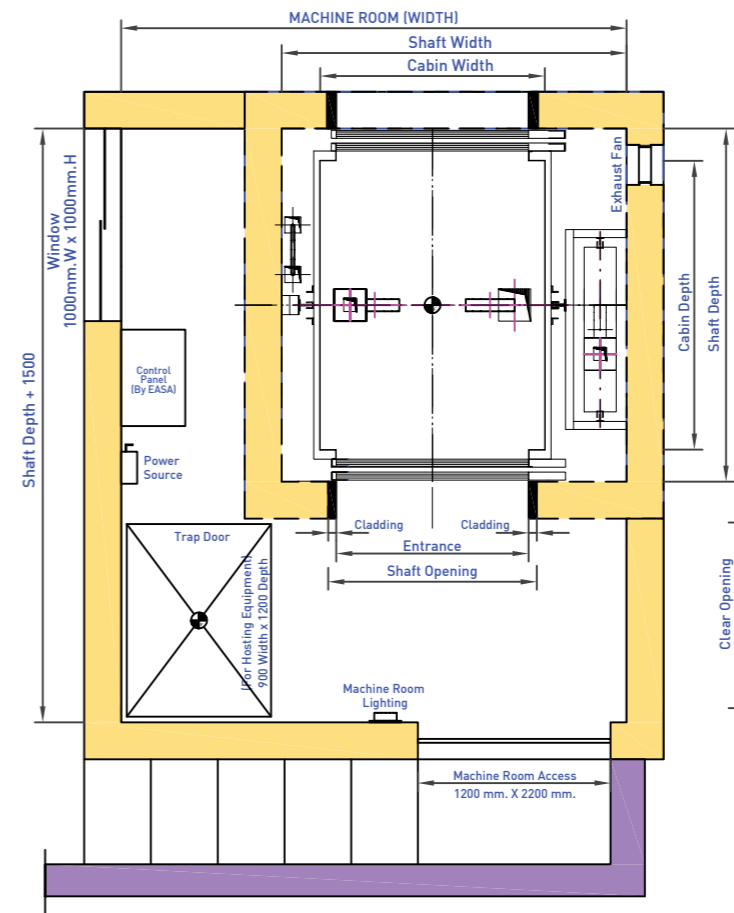
NOTE: * 50 mm. CLADDING ON EITHER SIDE CONSIDERED

NOTE:

1. All dimensions are in millimeters.
2. All dimensions are for clear finished lift wells after plastering.
3. All walls minimum 150 RCC or 230 brick (hoist way front wall 230 brick preferred).
4. RCC machine room structural floor slab 150 thick designed to sustain minimum 1000 Kg./ M²UDL.
5. Power supply 400 volts, 3 phase, 4 wires, 50 Hz and 230 volts 1 phase terminating in a MCCB/ECCB switch to be provided by clients.
6. For specific requirements our local representative will be happy to work with you in a preparation of working drawings.

FREIGHT ELEVATOR MACHINE ROOM

LIFT WELL & MACHINE ROOM PLAN



MANUAL OPERATED DOORS:

CAPACITY	CAR INSIDE		LIFT WELL		ENTRANCE	
	WIDTH	DEPTH	WIDTH	DEPTH	WIDTH	HEIGHT
525	1100	1200	1800	1600	1000	2000
750	1200	1600	1900	2000	1000	2000
1050	1400	1800	2100	2200	1200	2000
1500	1700	2000	2400	2400	1500	2000
2025	1800	2500	2550	2900	1600	2000
2550	2000	2600	2800	3000	1800	2000
3000	2200	3000	3000	3400	2000	2000
3525	2200	3500	3000	3900	2000	2100
4050	2500	3500	3300	3900	2200	2100
5025	2600	4000	3400	4400	2300	2100

AUTOMATIC DOORS:

CAPACITY	CAR INSIDE		LIFT WELL		ENTRANCE	
Kgs.	WIDTH	DEPTH	WIDTH	DEPTH	WIDTH	HEIGHT
525	1100	1200	1875	1750	1000	2000
750	1200	1600	1950	2150	1000	2000
1050	1400	1800	2200	2350	1200	2000
1500	1700	2000	2550	2550	1500	2000
2025	1800	2500	2750	3050	1600	2000
2550	2000	2600	3000	3150	1800	2000
3000	2200	3000	3250	3550	2000	2000
3525	2200	3500	3250	4050	2000	2100
4050	2500	3500	3550	4050	2200	2100
5025	2600	4000	3650	4550	2300	2100

CAPACITY	LIFT SPEED METERS/SEC.	PIT DEPTH	OVER HEAD	CLEAR(DOOR) OPENING	BELOW LENTICLE FROM	
					Manual	Automatic
525 TO 2525 Kgs.	0.25 to 0.50	1600	4600	1000	2250	2460
2525 TO 4000 Kgs.	0.25 To 0.32	1800	4800	2000	2250	2460

NOTE:-

1. All dimensions are in millimeters.
2. All dimensions are for clear finished lift walls after plastering.
3. All walls minimum 150 RCC or 230 brick (hoist way front wall 230 brick preferred).
4. RCC machine room structural floor slab 150 thick designed to sustain minimum 1000 Kg./ M²UDL.
5. Power supply 400 volts, 3 phase, 4 wires, 50Hz and 230 volts 1 phase terminating in a MCCB/ELCB switch to be provided by clients.
6. For specific requirements our local representative will be happy to work with you in a preparation of working drawings.

MANUFACTURING FACILITY

REDEFINING EXCELLENCE WITH STATE-OF-THE-ART ELEVATOR TECHNOLOGY



OTHER PRODUCTS



EASA Passenger Elevators comprise of a wide range of Machine Room Less and Machine Room type Elevators. We pioneer in Gearless machines and ECO friendly elevator installations. Standard and custom made elevators are designed as per your specific requirements.



Automobile Elevators are driven with heavy machines, and are used in automobile showrooms, workshops, parking lots, buildings, airports, garages etc.



Dumbwaiters are small service Elevators utilized in Homes, Hotels, Hospitals, Banquet Halls, Libraries, Industrial Kitchens, Departmental Stores & Restaurants etc. These lifts are used for transferring various materials between floor levels.



Stretcher Elevators are used in hospitals as part of medical care infrastructure. They have special features such as smooth jerk less travelling, low power consumption, accurate levelling, emergency control features and above all, reliability with safety. The sturdy floors and interiors ensure convenience and longevity.



Scan & Download Brochure



Scan & Explore Our Website



Scan for Any Enquiry